



MB-600

Mini excavator with petrol engine

PRODUCT-INFORMATION

Technical Data

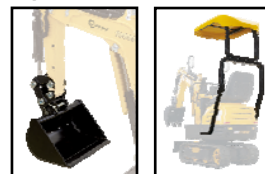
MB-600

Engine power	6,3 kW at 3.600 rpm
Displacement	306 cm ³
Hydraulic pumps	2 x 9L/min
Hydraulic working pressure	17,5 Mpa (175 bar)
Starting system	E-Start with key
Parking break	Hydraulically
Drive system	Chain drive (150mm wide rubber tracks)
Forces values	4,75 kN (Arm) 8,00 kN (Bucket) 4,36 kN (Thrust force)
Tank volumes	Engine oil (10W30): 1,1l Fuel (ROZ/RON95): 6,0l Hydraulic oil (HLP-22): 12l
Bucket	Volume: 0.011 m ³ Width: 290mm
Boom, swivel range	each 70° (left & right)
Rotation speed	9,3 U/min
Dirving speed	Max. 1,7 km/h
Climb angle	15°
Track width	690mm
Ground pressure	26,3 kPa (0,27 kgf/cm ²)
Weight (net/gross)	562 / 685 kg
Dimensions L/W/H	2286 / 730 / 1259 mm

Included in delivery:



Optional accessories:



Art. No.: MB600

EAN: 40 47424 00830 0

Equipment Features:

MB-600 - the versatile, compact and user-friendly mini excavator!

- As a perfect helper for work in confined spaces such as buildings or for smaller jobs in private gardens where there is no space for larger machines, the MB-600 provides valuable services. Our multi-talent is also ideally suited for drainage at the house, as the boom can be swiveled 70° to the left and right.
- The floor of the operating area is covered with a non-slip and impact-resistant rubber coating.
- An extremely narrow design and compact dimensions bring the MB-600 safely to the place of operation even through narrow gates and paths.
- It also has an LED spotlight, two mirrors, an hour meter and a horn!
- The following attachments are included in the scope of delivery:
 - Pallet Forks, Rake Attachment, "Bucket Thumb", Grapple
- Optional accessories:
 - *grading bucket for gasoline mini-excavator MB-600 --- Art.No. 5MB600AS --- EAN: 40 47424 00835 5*
 - *canopy for gasoline mini-excavator --- Art.No. 5MB600D --- EAN: 40 47424 00836 2*

Dimensions, mm

